

CRIBS

Center for Research for
Infant Birth and Survival



Fiscal Year 2020 Annual Report



cribs@kumc.edu
wichita.kumc.edu/cribs

Message from Director

It has been an exciting year of growth and development for CRIBS. We've expanded research and evaluation during this year with three additional projects funded through external grants. Our Baby Talk program had a record year, enrolling 389 participants! We were also thrown a couple curve balls this year with COVID-19 restrictions. Through teamwork and creativity, CRIBS was able to continue to serve pregnant and recently delivered women in our community. We were also able to continue to move forward with research and evaluation with the adoption of virtual interactions. Even though we are all still working from home and unsure when we will be together again, CRIBS will continue to work on our mission to eradicate preventable infant death in Kansas.



CRIBS Board of Directors

Executive Board

President: Zachary Kuhlmann, DO, KU School of Medicine-Wichita, Department of OB/GYN

Vice President: Tara Neil, MD, KU School of Medicine-Wichita, Department of Family Medicine

Secretary: Taneisha Scheuermann, PhD, University of Kansas Medical Center, Department of Population Health

Board Members

Christy Schunn, LSCSW, Kansas Infant Death and SIDS (KIDS) Network

Vicki Collie-Akers, PhD, University of Kansas Medical Center, Department of Population Health

Pam Shaw, MD, Pediatrics, University of Kansas Medical Center, Department of Pediatrics and Regional American Academy of Pediatrics Director

Jenni Harshbarger, PhD, Mosaic Mental Wellness, Wichita

Jeffrey Colvin, MD, JD, Children's Mercy, Department of Pediatrics

Lyndsay Byrnes, MD, MPH, KU School of Medicine-Wichita, Department of Pediatrics and Finney County Health Department

Ex Officio Members

Cari Schmidt, PhD, CRIBS Director, KU School of Medicine-Wichita, Department of Pediatrics

Stephanie Kuhlmann, DO, CRIBS Implementation Network Director, KU School of Medicine-Wichita, Department of Pediatrics

Trisha Richmeier, MBA, CRIBS Treasurer, KU School of Medicine-Wichita, Department of Pediatrics

Ashley Hervey, MEd, CRIBS Coordinator, KU School of Medicine-Wichita, Department of Pediatrics

PROGRAMS

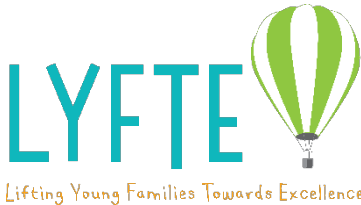
CRIBS programs targeting maternal and infant health:

- Community Collaborative Prenatal Education Program-Baby Talk (KDHE Title V Aid to Local)



Baby Talk started off strong, enrolling 181 women by December 31st, 2019. Starting in March 2020, Baby Talk classes were held exclusively online due to the COVID-19 pandemic. An additional setback for the year came in June 2020 when a community health worker left the program. Even with these setbacks, Baby Talk had a record year for enrollment with 389 participants which exceeded the grant goal of serving 350 Sedgwick County pregnant women.

- Lifting Young Families Towards Excellence (LYFTE; KDHE, Office of Adolescent Health)



This was the second and final year for the LYFTE program funded through the Office of Adolescent Health. The program continued to be offered in tandem with the Sedgwick County Health Department. In Fall, 2019, the part-time coordinator transitioned to the KSKidsMAP program, and a Wichita State University Social Work practicum student filled the position until May 2020. This year, 66 participants (54 female; 12 male) were served between CRIBS and the Sedgwick County Health Department. In total the program served 158 pregnant or parenting teens across the two sites. Continuation funding avenues are being explored to sustain this collaborative community program.

During Fiscal Year 2020, CRIBS developed the following programs for which funds have been awarded, but are pending contract approval:

- Prenatal Home Visiting Pilot Project (United Health Care)
Establish a Maternal Community Health Worker pilot program to improve pregnancy and birth outcomes for pregnant women enrolled in Kancare (Medicaid) through United Health Care. CRIBS will house the pilot program and hire two full-time Maternal Community Health Workers to serve 60 women a year from pregnancy through 12 weeks postpartum.
- Universal Home Visiting for Infants with Neonatal Abstinence Syndrome Pilot Project (KDHE)
The purpose of this pilot project is to adapt home visitation curriculum for high risk parents during substance-exposed infants' first year of life. CRIBS was selected as one of two locations in the state. Goals of the project are to (1) establish and implement processes for referrals by birthing centers, (2) pilot the enhanced home visitation curriculum with parents of substance-exposed infants, and (3) assist in developing strategies for scalability and sustainability.

RESEARCH AND EVALUATION

Current research and evaluation projects:

- Enhancing the Impact of Tobacco Cessation Programs
This pilot project was developed by the CRIBS Tobacco Cessation Workgroup and aims to improve the health of Kansans by reducing tobacco use among pregnant women. Initially the focus was Sedgwick County with funding from Kansas Health Foundation and a target enrollment of 50 pregnant women. In January 2020, we were awarded additional funding from the CVS Foundation to expand the project statewide with target enrollment increased to 100 participants (50 Sedgwick County and 50 statewide). Due to a vendor change with the Quitline, the project start date was delayed until January 2020. We were struggling to enroll pregnant women into the program and at the request of community partners we expanded to include postpartum women with infants up to 6 months of age. As of March, 2020, the COVID-19 pandemic suspended all in-person interactions, so we also modify the protocol to include virtual crib clinics. At the conclusion of FY2020, seven participants were enrolled in the program, four completed crib clinics and are awaiting follow-up, one completed follow-up and two we were unable to schedule crib clinic and are lost to follow-up. Also, due to the pandemic funders have granted a no cost extension.
- Access to Perinatal Mental Health Care in Sedgwick County
In May 2019, the Kansas Department of Health and Environment (KDHE) Bureau of Family Health released a request for applications for the Kansas Maternal and Child Health (MCH) Opportunity project. Only local MCH agencies were eligible and one award per community would be considered. Due to these requirements, Sedgwick County MCH awardees, CRIBS, Kansas Infant Death and SIDS (KIDS) Network, Inc. and the Sedgwick County Health Department collaborated on one application. The proposed project was to identify barriers for low-income women to access perinatal mental health services in Sedgwick County and would provide baseline data to aid in the development of action steps for the community. CRIBS collected structured interviews from three populations; 1) pregnant and recently delivered women; 2) Primary Care providers (Pediatricians, Family Medicine, Obstetricians) and 3) Mental Health providers. Thirty-three interviews were conducted. Outreach for the community expert workgroup was conducted throughout the grant period and the kick-off meeting was held on May 19, 2020. Those who volunteered (n=10) reviewed all interviews and met on June 30, 2020 to develop action steps.
- Concerns of Women regarding Pregnancy and Childbirth during the COVID-19 Crisis
The purpose of this exploratory study was to better understand experiences of pregnant women and new mother in Sedgwick County during the COVID-19 pandemic. A convenience sample of pregnant or recently delivered women (infants \leq 12 months) enrolled in CRIBS programs (e.g. Baby Talk) were utilize. CRIBS developed the survey to address impacts of the pandemic on pregnancy, infant care, postpartum care and mental health. The survey was emailed to 222 potential participants. Of those, 114 (51%) completed survey. Key findings were that most women did not experience access to care but did experience challenges related to areas such as finances, mental health and social support. Providers may be able to facilitate connection to resources to address some of these difficulties. The manuscript is currently under review.

- State-wide Safe Sleep Instructor Program Evaluation
 During Fiscal Year 2020, CRIBS was tasked with updating data collection forms and migrating all data collection to REDCap. In Fall 2019, CRIBS assisted the Kansas Infant Death and SIDS (KIDS) Network with their annual Safe Sleep Instructor Training. At this event, 43 new Safe Sleep Instructors attended the two-day training. Recertification moved to webinar format and CRIBS assisted with two Bronze Level Recertification webinars, two Hospital Recertification webinars and two Safe Sleep Star Outpatient Toolkit webinars. Throughout the year, CRIBS monitors data collection and provides reports to organizations at their request. CRIBS also provide the KIDS Network with a training report; Spring and Fall Community Baby Shower reports and an Annual Report.
- Kansas Infant Death and SIDS (KIDS) Network Children’s Initiative Fund (CIF) Evaluation
 CRIBS assisted the KIDS Network in collecting and reporting data for the Kansas Children’s Cabinet and Trust Fund’s annual Accountability Process. Specifically, CRIBS staff provide expert consultation on the KIDS Network’s program service outcomes and data collection, facilitate completion of the reporting process and attend meetings and interviews related to the process.
- Safe Sleep Instructor Toolkit Maintenance of Certification Level 4 (MOC-4) Quality Improvement Project
 The KIDS Network and CRIBS develop an outpatient provider certification program, the Safe Sleep Star program, which includes a Safe Sleep Toolkit. To encourage providers to implement the toolkit and promote infant safe sleep within their practices, a quality improvement framework has been developed that meets the standards for Maintenance of Certification Level 4 (MOC-4). The project has been reviewed and approved by the University of Kansas School of Medicine, an approved sponsor of the Multi-Specialty Portfolio Program™ (Portfolio Program), a service provided through the American Board of Medical Specialties® (ABMS). Due to COVID-19, implementation of the project with the first cohort has been postponed.
- KSKidsMAP: Enhancing access to pediatric mental health care through increased capacity of primary care providers (HRSA)
 Kansas was awarded a four-year (July 2019-June 2023) HRSA cooperative agreement program to address the mental health professional shortage. The Kansas program, KSKidsMAP to Mental Wellness, promotes and supports integrating behavioral health into primary care through pediatric mental health care telehealth training and access. The two main telehealth components are the Consultation Line and the bi-weekly TeleECHO Virtual Clinic sessions. This program is a partnership between the KDHE and the KUSM-W Departments of Pediatrics and Psychiatry and Behavioral Sciences. KSKidsMAP utilizes an Implementation Evaluation design that incorporates process evaluation with a program-monitoring component to produce quality information about program outputs and key implementation drivers. Data collection tools have been established to track progress towards goals, performance measures, and outcome measures throughout each phase of the project. This includes real time collection of data to inform quality improvement and training efforts for physicians and clinicians. A total of 72 physicians and clinicians enrolled in KSKidsMAP during Fiscal Year 2020. Providers who enrolled in the program in the first year indicated serving patients in 38/105 Kansas counties.

- Pregnancy Risk Assessment Monitoring System (PRAMS) Safe Sleep and Socio-Economic Status – PI: Jeffrey Colvin, MD, JDS
CRIBS is participating in a national collaborative led by Dr. Colvin to explore socio-economic factors and how they may impact safe sleep behaviors. The multidisciplinary collaborative is engaged in a secondary analysis of national PRAMS data. The manuscript is currently under development.

Additional research and evaluation projects under development include:

- Department of Children and Families (DCF) Safe Sleep Instructor Research Project
In Fall 2019, the focus of the Safe Sleep Instructor training was recruitment of DCF employees. The purpose of this descriptive study is to assess the DCF SSI training data. Findings will help identify successes, areas for improvement and potential areas for future program expansion.
- COBRE Grant research project to reduce tobacco use in pregnant women- PI: Taneisha Scheuermann, PhD
CRIBS was invited to assist with the recruitment and intervention goals of the study through the role of a co-investigator.
- Building Capacity in Parenting Teens as Safe Sleep Peer Educators (American SIDS Institute; under development)
In November 2019, American SIDS Institute released a request for research grant letter of intent. CRIBS in collaboration with the Safe Sleep Work Group developed an LOI and were invited to submit a full application in March 2020. The application is under development and will be submitted for the August 3, 2020 deadline.
- Safe Sleep Instructor Training Expansion
In collaboration with the KIDS Network, CRIBS developed an application in response to the AHRQ Conference Grant Programs (R13), FOA PA-16-453. The application was submitted to AHRQ on August 1, 2019. We were notified in October 2019 that our project was not funded but decided to resubmit in 2020. A revised application is underdevelopment and will be submitted for the August 3, 2020 deadline.
- Analysis of Vital Statistics Birth Outcomes by Maternal Language (protocol under development)
- Associates in Women’s Health Safe Sleep Toolkit Follow-up (protocol under development)

OUTREACH AND COLLABORATION

Over the course of the year, CRIBS was featured in various newsletters across Kansas.

- Greater Kansas MD News, August/September 2019 issue: <https://greaterkansas.mdnews.com/digital-editions>
- University of Kansas School of Medicine-Wichita JTO Newsletter, September 25, 2019: <http://wichita.kumc.edu/faculty-and-staff/jayhawk-talk-online/jayhawk-talk-online-archives.html>
- University of Kansas School of Medicine-Wichita EMBARK 2019-2020: <http://kusm-wichita.uberflip.com/i/1157351-embark-2019-2020>

The second annual CRIBS Symposium was tentatively scheduled for October 14, 2020 at Mark Arts in Wichita, KS. The format this year will focus on dissemination of projects and programs across Kansas. The planned agenda includes one plenary session, which due to travel restrictions will most likely be a local speaker. There will be two poster symposium sessions in which accepted abstracts will be presented in a short oral presentation followed by a poster/networking session. The day will conclude with a panel discussion and networking reception. Due to the COVID-19 pandemic, the CRIBS Board of Directors voted to postpone the Symposium until Spring 2021.

Collaboration is a focus area for CRIBS, and we pride ourselves in working with individuals from a variety of organizations across the state. Local collaboration during Fiscal Year 2020 included working with KUSM-W departments of Pediatrics and Psychiatry on the KSKidsMAP program. Specifically, with Rachel Brown, MD, Nicole Klaus, PhD, and Kari Harris, MD. CRIBS was also tasked with reviewing Dr. Nicole Klaus's mental health grant prior to submission. Baby Talk and LYFTE assisted Lisette Jacobson, PhD in Population Health with recruitment for her NIH K award project, eMOMS, on breastfeeding and nutrition.

CRIBS was invited to present on Lifting Young Families Towards Excellence (LYFTE) at a panel presentation at the Kansas Children's Cabinet Symposium on October 1, 2109 in Wichita, KS. In addition, CRIBS collaborated with a variety of community organizations across Sedgwick County.

- Sedgwick County Health Department
 - IRIS (Integrated Referral and Intake System)
 - LYFTE (Lifting Young Families Towards Excellence)
- Kansas Tobacco Quitline, Enhancing the Impact of Tobacco Cessation Programs
- Kansas Infant Death and SIDS (KIDS) Network, Safe Sleep Instructor program, Safe Sleep Community Baby Showers
- Robert J. Dole Veteran's Administration Medical Center, Community Baby Shower Consultant
- Wichita Black Nurses Association, Safe Sleep Community Baby Showers
- Kansas Children's Service League, Fatherhood grant application

During Fiscal Year 2020, CRIBS collaborated with faculty and staff on the University of Kansas Medical Center campus. In the department of Pediatrics, CRIBS worked closely with Jeffery Colvin, MD, JD, on the Pregnancy Risk Assessment Monitoring System (PRAMS) Safe Sleep and Socioeconomic Status (SES) project. We also assisted Barbara Pahud, MD, on her SPECTRE Grant resubmission. In Population Health on the Kansas City campus, Baby Talk and LYFTE assisted Board Member Taneisha Scheuermann, PhD on recruitment for her NIH K award research project regarding tobacco use and cessation attempts during

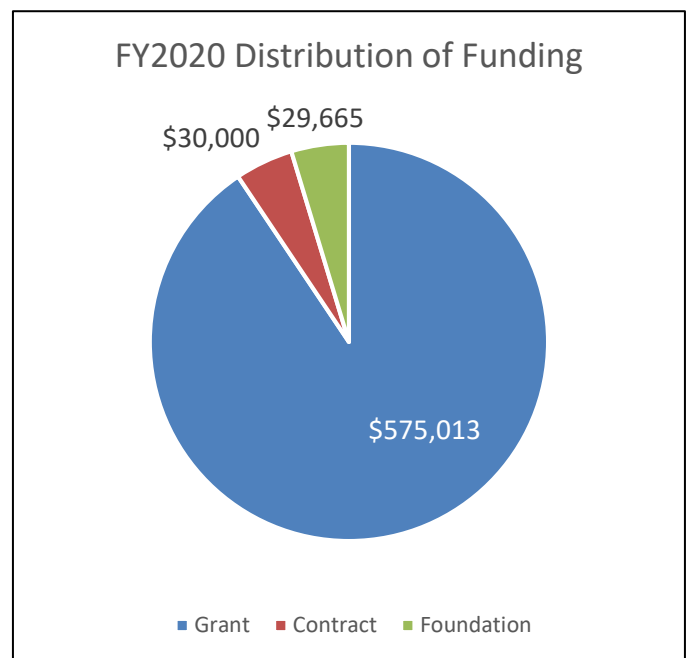
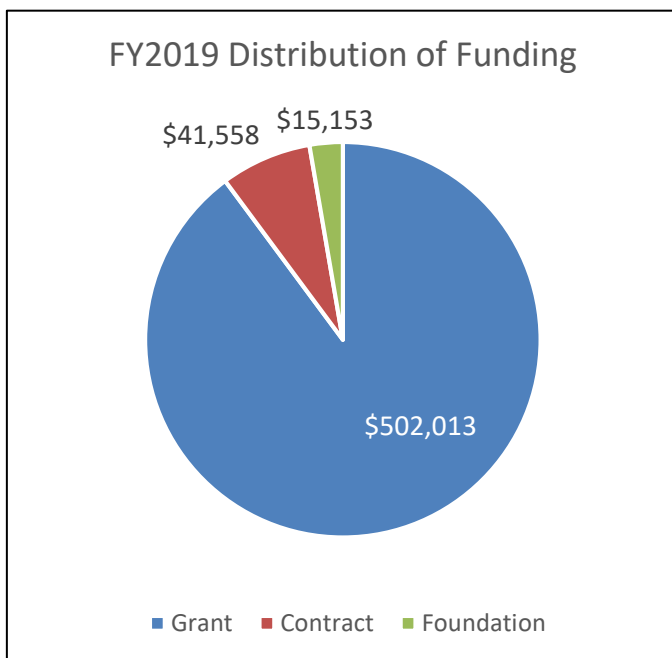
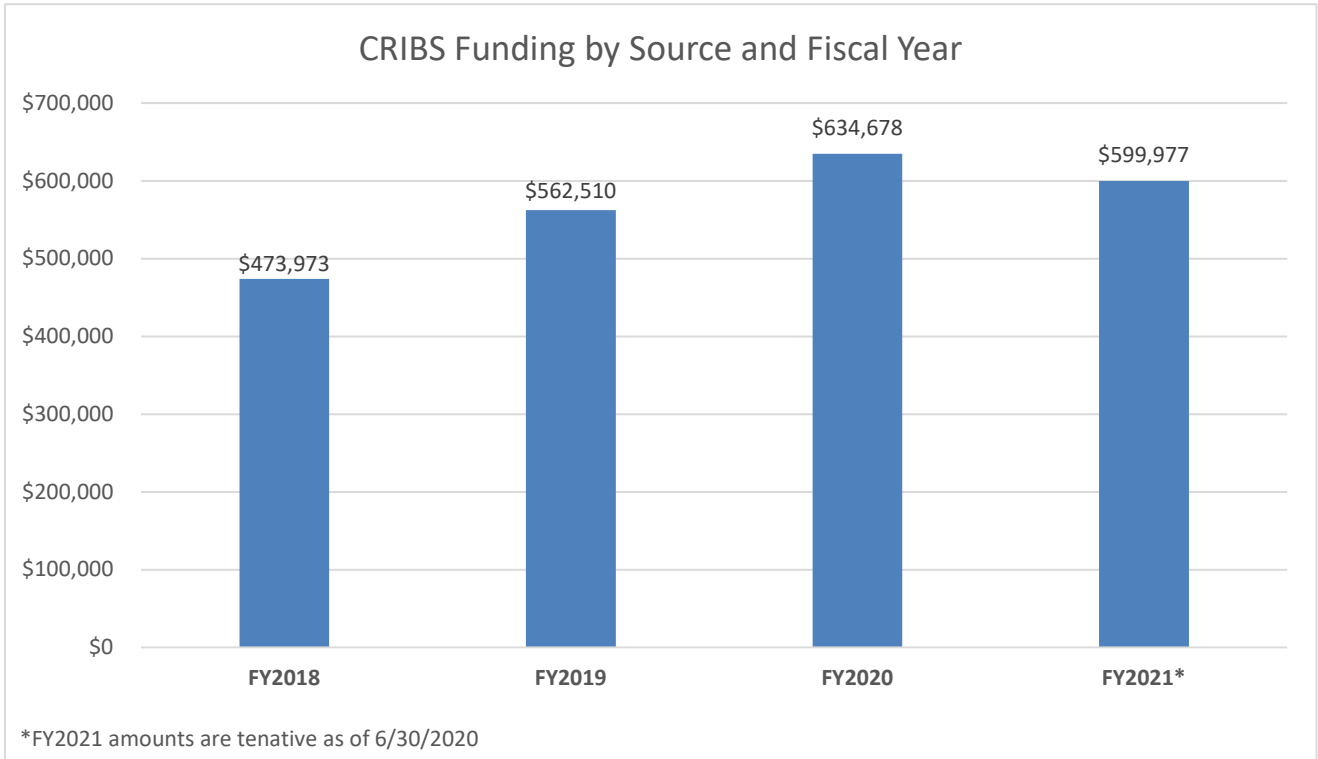
pregnancy, Msg4moms. In addition, CRIBS assisted with her tobacco project proposal for the COBRE Grant submission and Dr. Cari Schmidt (CRIBS director) will serve as a co-investigator on project. Throughout the year, Baby Talk and LYFTE assisted Ann Davis, MD, with recruitment for the momHealth2 breastfeeding clinical trial.

Community collaboration provides promotion of the center and enhances recruitment for programs and research. CRIBS is currently involved in the following committees, both locally and regionally:

- Kansas Maternal Child Health Council (KMCHC)
- Kansas Pregnancy Risk Assessment and Monitoring System (PRAMS) Steering Committee
- Kansas State-Wide Collaborative Improvement & Innovation Network to Reduce Infant Mortality (CollIN): Safe Sleep
- Sedgwick County Fetal Infant Mortality Review
- Sedgwick County Health Alliance
- Sedgwick County Maternal Infant Health Coalition
- Sedgwick County IRIS Workgroup

FUNDING

Through grants, contracts and donations, CRIBS brought in \$634,678 for Fiscal Year 2020. The amounts below reflect portions of grants and contracts coming directly to CRIBS (e.g., only the evaluation portion of the KSKidsMAP grant).



Current grants and contracts.

Principal Investigator	Investigators	Title	Funding Source	Direct Costs	Years of Award	Status
Ahlers-Schmidt CR	Hervey A	Program Evaluation Contract	KIDS Network, INC	\$5,000/yr. = \$45,000	2014-2022	Current
Ahlers-Schmidt CR	Schunn C, Rosell J, Kuhlmann Z, Kuhlmann S, Brown M, Engel E (2015-2018); Hervey A (2019-present)	Community Collaborative Prenatal Education Program (Baby Talk)	KDHE	\$2,161,911	2015-2021	Current
Ahlers-Schmidt CR	Hervey A, Schunn C, Torres M, CRIBS Tobacco Cessation Workgroup	Enhancing the Impact of Tobacco Cessation Programs	Kansas Health Foundation	\$25,000	2019-2021	Current
Ahlers-Schmidt CR		Baby Talk Car Seat Check Support	Enterprise Foundation	\$2,000	2019-2020	Current
Harris K Ahlers-Schmidt CR	Brown R, Klaus N, Pate B, Hervey A, Aguila Gonzalez A	KSKidsMAP to Mental Wellness	KDHE subcontract on HRSA grant	\$1,500,684	2019-2023	Current
Ahlers-Schmidt CR	Hervey A, Schunn C, Torres M, CRIBS Tobacco Cessation Workgroup	Enhancing the Impact of Tobacco Cessation Programs: Statewide Expansion	CVS Health Foundation	\$30,000	2020-2021	Current
Ahlers-Schmidt CR	Schunn C, Torres M, Hervey A	Safe Sleep Instructor Evaluation	United Methodist Health Ministries grant to KIDS Network	\$90,000	2020-2022	Current
Ahlers-Schmidt CR	Hervey A; Clifford D	Lifting Young Families Towards Excellence (LYFTE)	KDHE PMI	\$52,707	2020-2021	Current
Ahlers-Schmidt CR	Hervey A; Clifford D	LYFTE	KDHE TPTCM	\$86,987	2020-2021	Current
Ahlers-Schmidt CR	Richmeier T	CRIBS Symposium 2020	Earl J Mills Foundation	\$10,000	2020-2021	Current
Ahlers-Schmidt CR	Hervey A	Maternal Child Health Community Health Workers Pilot Project	United Health Care	\$188,996	2020-2022	Awarded, Pending Contract
Ahlers-Schmidt CR	Hervey A, Cousens M	NAS Home Visitation	KDHE	\$25,000	2020-2021	Awarded, Pending Contract
Ahlers-Schmidt CR	Hervey A, Cousens M	Drivers Education Support for Teen Moms	KU Auxiliary	\$3,000	2020-2021	Under Review
Ahlers-Schmidt CR	Hervey A	Teen SSI Program Pilot	American SIDS Institute	\$70,000	2021-2023	Under Review
Ahlers-Schmidt CR	Hervey A, Torres M, Schunn C	Changing the Culture of Infant Care through Collaboration: A Conference to Connect Clinics, Hospitals and Community Programs	Agency for Healthcare Research and Quality	\$150,000	2021-2024	Under Review

Dissemination

Peer Reviewed Publications

- Ahlers-Schmidt CR, Okut H, Dowling J. Impact of Prenatal Education on Breastfeeding Initiation Among Low-Income Women. *Am J Health Promot.* 2020;890117120925342. doi:10.1177/0890117120925342
- Harris K, Sivamurthy S, Mohiuddin H, Aguila Gonzalez A, Bui T, Andrews K, Cohen J, McConnell M, Ahlers-Schmidt CR. Contraceptive Counseling in the Postpartum Period Could Pediatricians Have a Role? *Maternal and Child Health J.* 2020;24(7):923-931.
- Ahlers-Schmidt CR, Schunn C, Hervey AM, Dempsey M, Blackmon S, Davis B, Baker T, Mayes CA, Torres M. Redesigned community baby showers to promote infant safe sleep. *Health Education Journal.* 2020; 0017896920935918.

Publications Under Review

- Ahlers-Schmidt CR, Schunn C, Hervey AM, Torres M, Cordoba AP. Safe Sleep Community Baby Showers to Reduce Infant Mortality Risk Factors for Spanish-Speaking Women. *Journal of Health Care for the Poor and Underserved.* Under Review. Submitted February 2020.
- Aguila Gonzalez A, Henao M, Ahlers-Schmidt CR. Developing Culturally Competent Prenatal Education for Spanish-Speaking Women. Under review. Submitted May 2020.
- Ahlers-Schmidt CR, Hervey AM, Neil T, Kuhlmann S, Kuhlmann Z. Concerns of Women regarding Pregnancy and Childbirth during the COVID-19 Pandemic. *Patient Education and Counseling.* Under Review. Submitted June 2020.

Oral Presentations-National and International

- Ahlers-Schmidt CR, Okut Hayrettin, Dowling J. Impact of Prenatal Education on Breastfeeding Initiation among Low Income Women. *Pediatric Academic Societies (PAS) 2020 Meeting.* Peer-reviewed, May 2-5, 2020; Philadelphia, PA. (Conference Canceled).

Poster Presentations-National and International

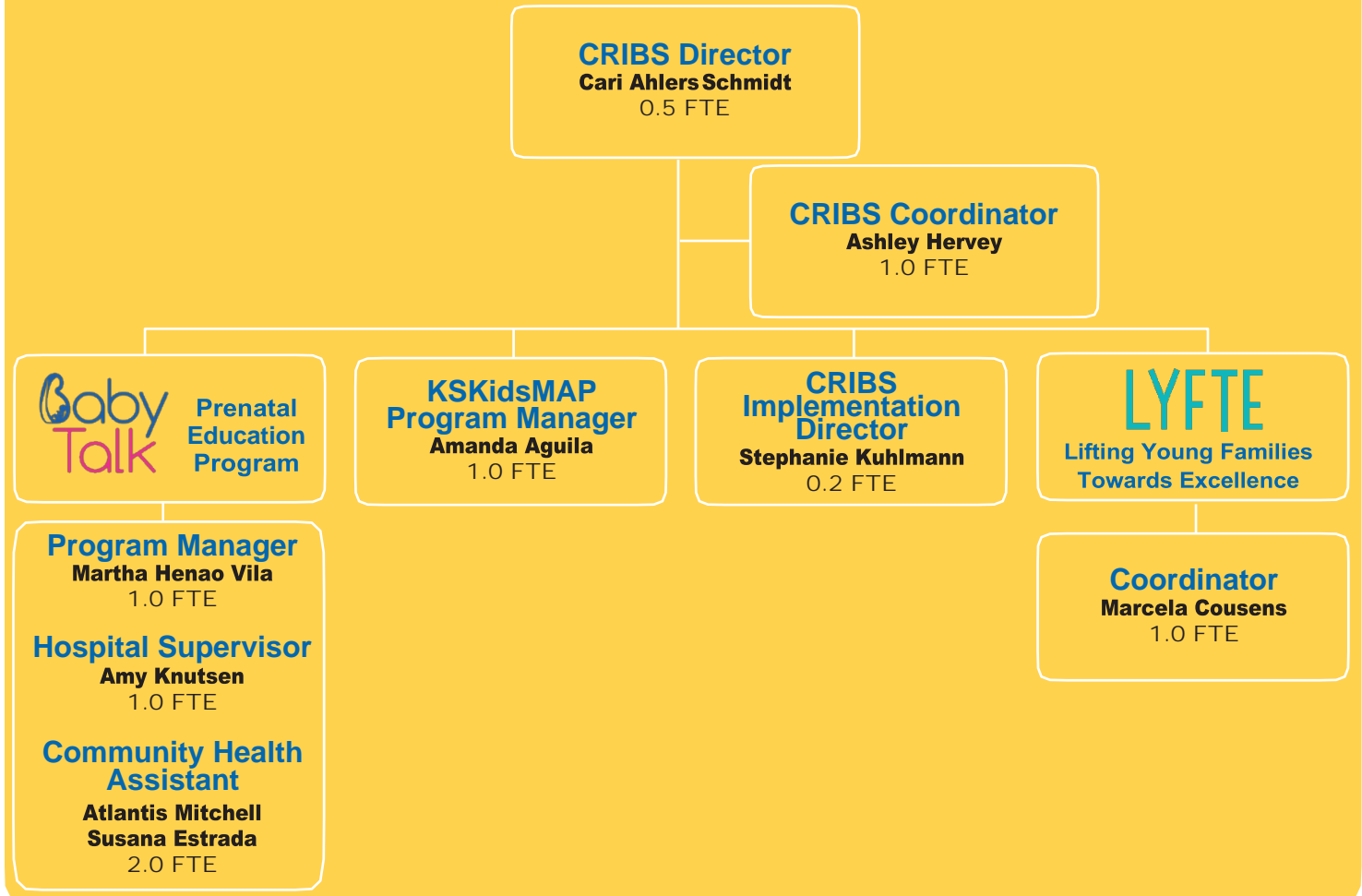
- Ahlers-Schmidt CR, Schunn C, Hervey A, Torres M, Sage C, Henao M, Kuhlmann S. Infant Safe Sleep Promotion: Increasing Capacity of Department of Children and Families Employees. *Pediatric Academic Societies (PAS) 2020 Meeting.* Peer-reviewed, May 2-5, 2020; Philadelphia, PA. (Conference Canceled).

CRIBS

Center for Research for
Infant Birth and Survival



ORGANIZATIONAL CHART



Contact Information

Cari R. Ahlers Schmidt, PhD
Director, CRIBS
Director, Pediatric Research Division
Research Professor
The University of Kansas School of
Medicine-Wichita
Department of Pediatrics
Wesley Medical Arts Tower
3243 E. Murdock St., Suite 602
Wichita, KS 67208
Phone: 316-962-7923
Fax: 316-962-7679
cschmidt3@kumc.edu

Stephanie Kuhlmann, DO
Implementation Director, CRIBS
Associate Professor
The University of Kansas School of
Medicine-Wichita
Department of Pediatrics
Wesley Medical Arts Tower
3243 E. Murdock St., Suite 602
skuhlmann@kumc.edu

Ashley M. Hervey, MEd
Manager, CRIBS
The University of Kansas School of
Medicine-Wichita
Department of Pediatrics
Wesley Medical Arts Tower
3243 E. Murdock St., Suite 602
Wichita, KS 67208
Phone: 316-962-7947
Fax: 316-962-7679
ahervey@kumc.edu