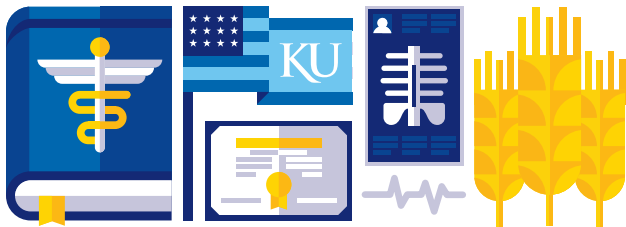




## A NATIONAL LEADER IN PRIMARY CARE



## FIRST

in the nation in percentage of graduates who go to rural areas\*

## SECOND

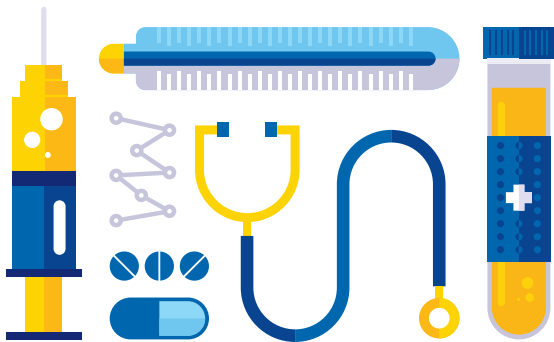
in the nation in percentage of graduates who go to Health Personnel Shortage Areas (HPSA)\*

## SIXTH

in the nation in producing primary care physicians\*

\* George Washington University / Robert Graham Center, 2012.

## ALL ABOUT US



## 203

currently enrolled students

## 75

full-time faculty and 74 part-time

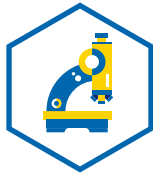
## 921

volunteer faculty

## 1973 FOUNDING

expanded to a four-year curriculum in 2010

## KANSAS NEEDS MORE DOCTORS



## 39TH OF 50

states in number of physicians per capita

## 60 PERCENT

of primary care physicians in Kansas are over age 45, half of those are over 50\*

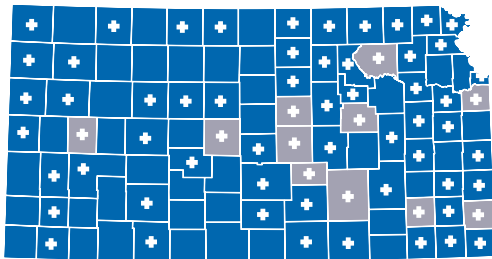
## 90 OF 105

counties are designated as medically underserved\*\*

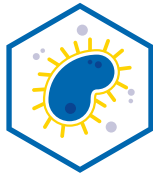
\* American Association of Medical Colleges, 2013

\*\* Kansas Department of Health and Environment, 2014

## OUR DOCS BECOME YOUR DOCS



✚ KUSM-Wichita Graduate ■ Underserved for primary Care



## 72 OF 105

Kansas counties have KU School of Medicine-Wichita graduates

## 1,047 RESIDENTS

have graduated from our Department of Family and Community Medicine

## 50-PLUS

percent of the doctors in Sedgwick County are graduates of the KU School of Medicine-Wichita or its residency programs

### A HEALTHY KANSAS STARTS HERE

1010 North Kansas | Wichita, KS | 67214

For more information, please contact Director of Public Affairs Denice Bruce at [dbruce2@kumc.edu](mailto:dbruce2@kumc.edu) or 316-293-3536.

**KU** SCHOOL OF MEDICINE  
**WICHITA**  
The University of Kansas